



WHY changes are needed or wanted?

● **ISSUES:** Explain issues that compromise your vision for the future of your place

● **WHO** identifies these issues and who is affected by them?

● **HOW** will you engage with people to define the issues?





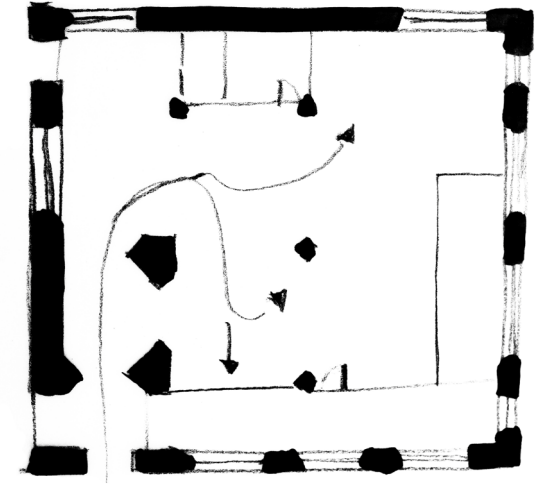
WHY changes are needed or wanted?

- **ISSUES:** Explain issues that compromise your vision for the future of your place

Safety and lack of disabled access are a key problem. This affects the capacity of the church to serve elderly and disabled people.

You need to climb up stairs to get in the building and the floor in the church is divided in different levels

which creates safety concerns during certain activities. This also compromises access to the café, which is our main source of income. So this issue also affects the sustainability of the church.



- **WHO** identifies these issues and who is affected by them?

The congregation, visitors and tourists are affected by this issue. People from all the above categories have highlighted this issue in our feedback book.

- **HOW** will you engage with people to define the issues?

A feedback table can be placed outside the church to collect views of people that may want to visit the church. The table may have information about activities in the church but also ask questions about accessing the church space.





WHY changes are needed or wanted?

- **OUTCOMES:** Articulate outcomes that you need or want to achieve in the future

- **Who identifies and who benefits from these outcomes?**

- **HOW will you engage with people to define the issues?**





WHY changes are needed or wanted?

- **OUTCOMES:** Articulate outcomes that you need or want to achieve in the future

The sustainability of the church and its capacity to serve its worshiping and community activities is the key desired outcome and driver of this change.

We want to create a space that can be used by several groups at the same time.

This will allow us to run the café in parallel with other regular activities of the church such as our therapeutic activities and wellbeing workshops. This is key for the financial sustainability of the church but also its success in attracting people to come in and stay.

- **Who identifies and who benefits from these outcomes?**

The main beneficiaries are the congregation as well as the other current users of the church.

- **HOW will you engage with people to define the issues?**

We will run a series of meetings and workshops with users of the space to discuss their vision for the future and how the different activities can work better alongside one another.





WHY changes are needed or wanted?

● **ASSETS:** Identify assets that can contribute to the future of your place

● **WHO** identifies these assets and who holds them?

● **HOW** will you engage with people to define those assets?





WHY changes are needed or wanted?

- **ASSETS: Identify assets that can contribute to the future of your place**

We have a beautiful building in a central location, which can potentially attract a variety of people in: those interested in heritage, and tourists walking around the centre of our city, as well as local families who look for things to do with their children.

We also have an engaged congregation which generally supports the building group and the idea of opening up the church to different users.

- **WHO identifies these assets and who holds them?**

The church is Grade II listed and a recent survey identified some interesting architectural features.

We have a heritage expert in our building group.

- **HOW will you engage with people to define those assets?**

We can organise a community heritage day to explore interest in the church and identify people who may want to invest in its future.

